

# The Business Case for IBM i Green Screen UI Modernization



Learn how IBM i web and mobile applications can add value to your organization by driving revenue, increasing competitive advantage and delighting end users.

# Table of contents

|   |    |
|---|----|
| Extend the life of your IBM i with a modern interface . . . . .         | 3  |
| Increase end user productivity . . . . .                                | 6  |
| Improve workflows . . . . .   | 8  |
| Easy access from anywhere, at any time . . . . .                        | 10 |
| Improve business processes with mobile devices . . . . .                | 11 |
| Provide access to customers and partners to improve service . . . . .   | 15 |
| Add more value with charts and other new functionality . . . . .        | 16 |
| Leverage IBM i resources and future-proof applications . . . . .        | 18 |
| Decrease training costs . . . . .                                       | 20 |
| Integrate with other technologies, platforms and data sources . . . . . | 21 |
| Integrate with Windows applications. . . . .                            | 23 |
| Solutions for all of your IBM i UI modernization needs . . . . .        | 25 |
| Modernization options to meet your needs. . . . .                       | 26 |
| A phased approach to UI modernization . . . . .                         | 27 |
| IBM i portal for secure access to IBM i web applications . . . . .      | 29 |
| Strategic web applications . . . . .                                    | 30 |
| IBM i modernization experts . . . . .                                   | 31 |

CREATED BY THE FOLLOWING IBM i MODERNIZATION EXPERTS:

*Writer:* Marcel Sarrasin, VP of Marketing and Business Development  
*Designer:* Menno van Mil, Design Manager

*Editors:* Candice Schultz, Marketing Program Manager  
Duncan Kenzie



# Extend the life of your IBM i with a modern interface

Applications and data are the cornerstone of over 150,000 organizations that run mission-critical business applications on IBM's Power Systems IBM i (formerly known as AS/400). The platform's low total cost of ownership, reliability, security and integrated database make it easy to understand why its users are so passionate about it.

Unfortunately, the value of IBM i applications is often hidden behind unintuitive green screen interfaces that make the technology look outdated. We've seen situations where organizations running IBM i have been acquired or have upper management who perceive the IBM i as outdated, resulting in a move to migrate off the platform. These projects can span multiple years, exceed deadlines and cost hundreds of thousands of dollars.

Migrating to a new platform offers little advantage over the IBM i and provides a bleak outlook for RPG programmers. For these reasons, doing nothing about your green screens can be costly.

Digital transformation projects, on the other hand, are generally much narrower in scope and lower risk. Modernizing the UI of your applications, as well as developing new, strategic web applications can go a long way in maximizing your investment in IBM i and aligning IT with business needs. End users and management will more readily



## Extend the life of your IBM i with a modern interface

accept a modern, intuitive interface that reflects the value of the underlying program. Web applications are also much easier to access than green screens, which can make the prospect of giving partners and customers self-serve access more viable.

Delivering modern web and mobile applications also offers financial advantages. Organizations can make users more productive and improve workflows by replacing pen-and-paper processes with direct access to applications via browsers on PCs, Macs and mobile devices. New functionality, such as dropdowns and autocompletes, can lead to faster data entry, while a familiar interface with consistent navigation can reduce training costs. The ability to integrate with other web technologies can also add more value to enterprise applications.

Giving your green screens a web GUI can breathe new life into your IBM i by delivering applications that look and work the way users and management expect. So much is possible with today's modernization tools: You can add new functionality such as images, drop downs and tabs, use RPG Open Access to create scrolling grids and extend your screens way beyond the confines of 80 or 132 columns.

## Extend the life of your IBM i with a modern interface

If you're concerned about using your existing staff and skills to accomplish all of the above, there are solutions that can help. Refactoring tools can help you meet tight deadlines by automatically rendering your green screens as web pages, and template-based development tools can reduce the learning curve in creating new IBM i applications. We'll highlight a couple solutions at the end of this eBook.

*This eBook highlights the top business reasons for IBM i UI modernization. Each reason is supported by real-world examples of IBM i applications that were created using Newlook, Presto and/or WebSmart, Fresche's IBM i application modernization solutions.*

## Increase end user productivity

Green screen modernization offers value above and beyond an attractive interface for your applications. A well-designed web application should perform better than a green screen and increase productivity by reducing keystrokes and errors. Each small gain can lead to significant time savings, especially on frequently-used screens.

Here are additional ways you can increase productivity with web and mobile applications:

- **Speed up data entry and reduce errors:** Incorporate drop down lists, datepickers, radio buttons and autocompletes to reduce errors and the time it takes to look up and enter data. You can also add validation messages that appear immediately after a user incorrectly fills out an input field.
- **Improve navigation:** Function keys and subfile options are not common UI elements in today's web-based world. You can replace function keys with clickable links and buttons to provide a more intuitive and consistent way to navigate screens. Tabs make information easier to digest by uncluttering screens and grouping elements together.

## Increase end user productivity

With web and mobile applications, you can further improve navigation with macros that shortcut users to their desired screens so they don't have to navigate through multiple screens of menu options.

The screenshot displays a web application titled "Utility Billing" with a user logged in as "UB220". The interface includes a left-hand navigation menu with categories like "Accounts Payable", "General Ledger", and "Utility Billing V2R2H0". The main content area shows a "Work With Service Location" window with a table of service locations. A context menu is open over the second row of the table, offering actions such as "Change", "Copy", "Delete", "Display", "Notepad", "Transactions", "Meters", "Work Service Orders", "Change Book/Route", "Readings", "Archive", and "Quit".

| Book | Service Loc | Route | Route Seq | Service Location/Customers | Revenue & Tax       |
|------|-------------|-------|-----------|----------------------------|---------------------|
| 1    | 40          | 1     | 5000      | 1308 N ARKANSAS AVE        | CITY - COMMERCIAL * |
| 11   | 57566       |       |           | TACO BELL                  |                     |
| 1    | 70          | 1     | 6000      | 1302 N                     | CITY - COMMERCIAL   |
| 8    | 40483       |       |           | Z-TANS                     |                     |
| 1    | 120         | 1     | 11000     | 1312 N                     | CITY - COMMERCIAL   |
| 12   | 96485       |       |           | LA VILLE                   |                     |
| 1    | 180         | 1     | 16000     | 1400 N                     | CITY - COMMERCIAL   |
| 9    | 00789       |       |           | TEXT BQ                    |                     |
| 1    | 190         | 1     | 17000     | 1407 N                     | CITY - COMMERCIAL * |

- Arkansas Data Services increased end user productivity by customizing their most-used screens. They replaced window lookups with drop downs or auto completes and added date pickers to speed up data entry. They also improved navigation and screen design by transforming subfile options into right-click context menus and splitting up busy screens into tabs.

[Learn more and view screenshots »](#)

# Improve workflows

Web applications give you many opportunities to improve workflows. Most often, organizations replace pen-and-paper processes by giving personnel direct access to web applications. This eliminates the need to rekey information and leads to significant time savings.

Here are some additional ways you can improve workflows:

- **Direct data entry:** Reduce heads-down data entry by giving users the ability to enter the data themselves.
- **Mobile devices:** You can replace pen-and-paper processes by giving users mobile access to modernized applications.
- **Spreadsheets:** Create downloadable spreadsheets so users don't have to copy and paste.
- **Videos:** Link to instructional videos on YouTube instead of using text-based F1 help.



# Improve workflows

**Medical Laboratory**  
Medical Laboratories

### Microbiology Results and Observations Entry

QA TOR

**Worksheet Information**

Barcode: 010  
Service Date: 2013-07-30  
Test Ordered: WOUND CULTURE  
Worksheet: MISC  
Bacti #: 000000  
Remarks: SITE: ARM SCRAP ARM WOUND

**Patient Information**

Patient: DOE, JOHN  
Age: 62  
Sex: M  
Physician: M.C. ESCHER  
Phone: 123-456-7000

Obs Status: NEW  
Int Rpt: NOT REQUIRED  
Source: ARM  
Vitek: NOT REQUIRED  
Last Updated: ESCHER - 2013-02-12 16:51:12

Observation | Comments | Activity +

#### Observations and Results

| SEQ                       | Note                       | User   | Date       | Time  | Options               |
|---------------------------|----------------------------|--------|------------|-------|-----------------------|
| <b>MICROSCOPY</b>         |                            |        |            |       |                       |
| 1                         | WBC RARE                   | SMITH  | 2013-08-17 | 16:14 | Print   Edit   Delete |
| <b>CULTURE RESULTS</b>    |                            |        |            |       |                       |
| 1                         | MIXED BACTERIA HEAVY       |        | 2013-08-13 | 15:01 | Print   Edit   Delete |
| 2                         | GRAM-POSITIVE C OCCASIONAL |        | 2013-08-13 | 15:03 | Print   Edit   Delete |
|                           | Zone 11                    |        |            |       | Print   Edit   Delete |
| <b>PUBLISHED COMMENTS</b> |                            |        |            |       |                       |
| 1                         | SENSITIVITY TO             | SMITH  | 2013-08-13 | 15:01 | Print   Edit   Delete |
| 2                         | FURTHER REPORT             | ESCHER | 2013-08-15 | 16:47 | Print   Edit   Delete |

Exit | Cancel | Add | Interim Report | Default Neg Result | Preview Result | Publish Results (FINAL)

- A prominent health care company used Fresche Solutions to give their existing green screens a web GUI. This has increased operational efficiency by streamlining data entry and reducing keying errors. Lab technicians can now record and publish test results on the fly, which has eliminated the delays and errors associated with pen-and-paper data entry.

[Learn more and view screenshots »](#)

## Easy access from anywhere, at any time

Web applications eliminate the need for you to purchase and install 5250 emulators for all of your end users. Instead, they can access the applications from web browsers on any PC, Mac, smartphone or tablet without installing any additional software. Web-based solutions are also easier to deploy compared to Client/Server applications that require installing the application and its updates on each PC. If you decide to provide access outside of your network, you can use VPN or SSL for security.

Alpine School District used Fresche solutions to modernize their IBM i applications and give their bus drivers access from outside the district. All employees, including remote users and those who use Macs, can now access the screens from anywhere, at any time.

[Learn more »](#)



# Improve business processes with mobile devices

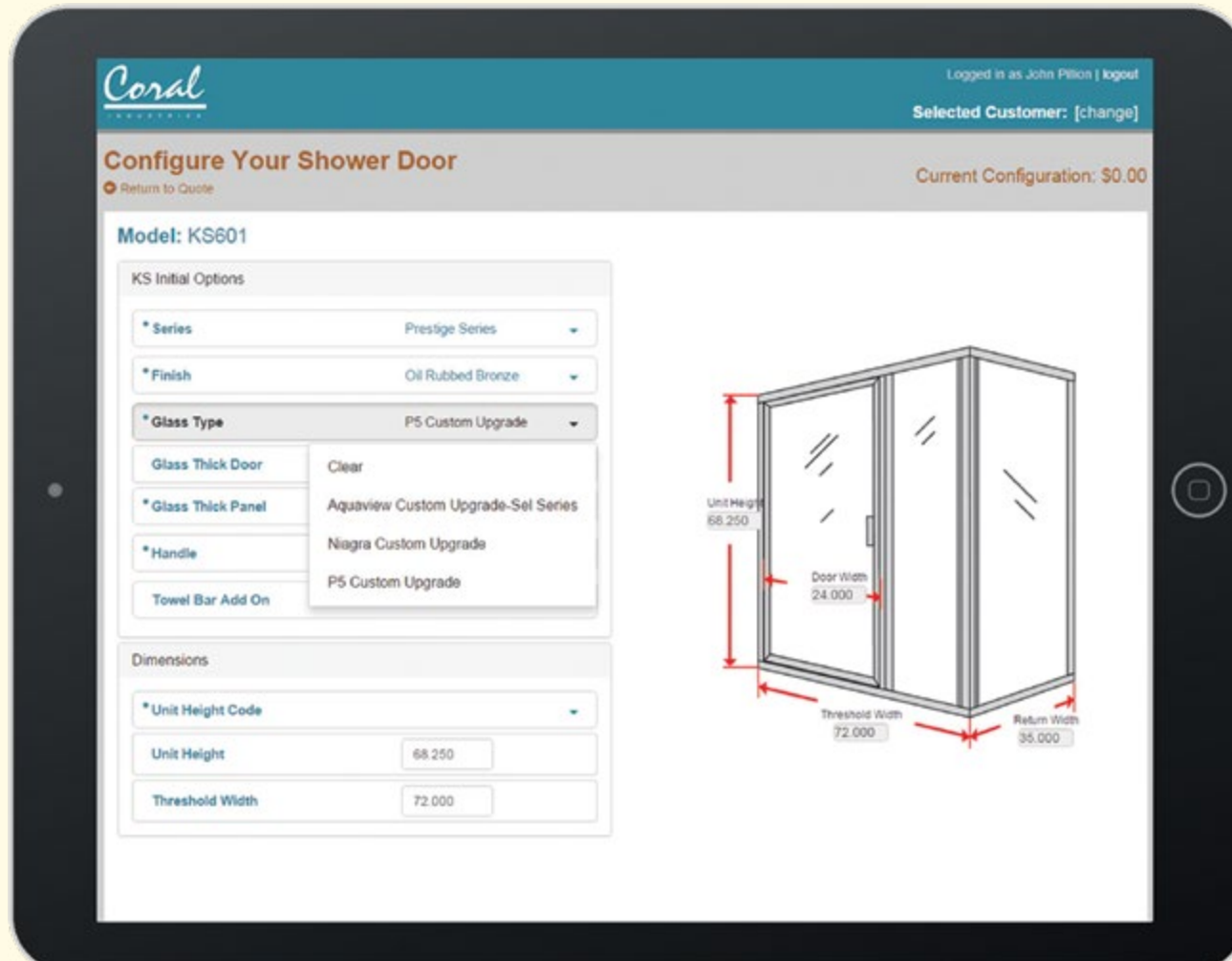
Deploying mobile IBM i applications allows you to extract even more value from the platform. This provides users with remote, convenient access to your applications. It also improves many business processes by replacing paper-based processes that require rekeying, and replacing stagnant information with real-time data.

Here are some examples of mobile applications we've seen used in businesses:

- **Sales representatives:** Pricing, inventory and contact information
- **CEOs:** View sales charts and other key metrics
- **Warehouse staff:** Scan items and replace paper-based processes
- **Teachers:** Take attendance

Using an HTML5 approach to web development is a quick way to make your applications available from browsers on all popular devices. You can even create mobile applications that you deploy through an app store to take advantage of that deployment approach and of device-specific features, like using the camera to scan barcodes.

# Improve business processes with mobile devices



- Coral Industries used Fresche solutions to develop a new mobile web application for visually configuring shower doors. The application leverages Friedman ERP's APIs to read and write to Coral's existing database.

This integration has greatly improved processes for the organization: When a user completes a configuration in the app, the order details are submitted directly to the ERP. Lookups are also database-driven, which provides real-time access to information.

## Improve business processes with mobile devices

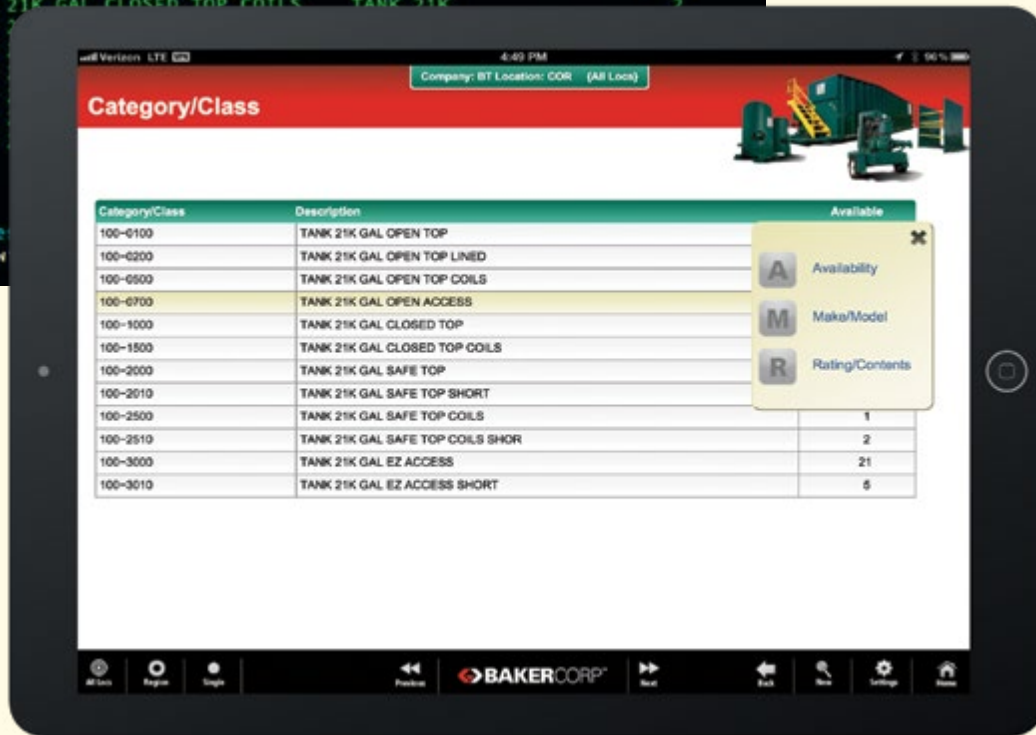
Some web application development solutions have built-in “responsive” support, which makes it even easier for IBM i programmers to transform their green screens into web GUIs. Responsive applications are optimized for both desktop and mobile and will automatically adapt to the device it is accessed from.

For instance, when a user accesses a web enabled application from their smartphone, elements such as input fields can be stacked while other elements such as images can be hidden. This allows developers to more easily create modernized green screen applications tailored to any device by using the same underlying design effort and code base.

# Improve business processes with mobile applications

```
10/30/17 11:22:49          Equipment Search          Sys: WSUATEST
                               Cmp: BT Loc: COR
                               Mode All Locs
Type option, press Enter to continue.  11=DRC  12=Decal  13=Accessories
1=Select 2=Avail/loc 3=Last Rent 4=Acq Date 5=Resvtns 6=Rates 7=Specs
                               10=Tank Card
Opt Cat/Class Description          Search Word          Avail
---  ---  ---  ---  ---  ---
100-0100 TANK 21K GAL OPEN TOP          TANK 21K            39
100-0200 TANK 21K GAL OPEN TOP LINED  TANK 21K
100-0500 TANK 21K GAL OPEN TOP COILS  TANK 21K
100-0700 TANK 21K GAL OPEN ACCESS     TANK 21K            10
100-1000 TANK 21K GAL CLOSED TOP       TANK 21K            17
100-1500 TANK 21K GAL CLOSED TOP COILS TANK 21K            2
100-2000 TANK
100-2010 TANK
100-2500 TANK
100-2510 TANK
100-3000 TANK
100-3010 TANK

F3=Exit  F5=Refre
Select Cat/Class w
```



- BakerCorp selected Fresche to reface an existing application and provide a modern, iPad-friendly interface. The project took just 10 days from start to delivery, and has saved an average of 3,500 hours each month across 175 users.

[Learn more »](#)

## Provide access to customers and partners to improve service

You likely haven't given business partners and customers access to your applications because green screens look outdated and require the end user to install a 5250 emulator. Repurposing your applications by offering self-serve, browser-based access to your applications is a much more attractive option.

You'll provide better service by giving these users the capability to check inventory levels and place their own orders at their convenience. This also saves time for customer service representatives who no longer have to take phone calls to place orders or look up pricing and inventory on behalf of customers or partners. Some organizations even reassign these employees to work on higher value tasks.

- Vail Resorts chose Fresche to create web services that bridge the gap between systems and encapsulate the workflow of their RPG logic. They completed the project in just 10 days, eliminating 52 weeks of manual effort.

Since deploying, Vail has seen a 40% reduction in training costs and have happier customers because they encounter fewer data entry errors.

[View case study»](#)

## Add more value with charts and other new functionality

Web applications provide countless opportunities to visually represent data and take advantage of productivity features that aren't possible to implement with green screens.

Here are a few ways that you can add more value to your applications:

- **Charts and dashboards:** Visually represent real-time data. This gives managers the big picture and the ability to drill down into the details.
- **Images:** Add images of products that users can reference when looking up items.
- **PDFs:** Link to PDFs of invoices and other documents.
- **Maps:** Show address locations with Google Maps to save dispatch or sales personnel time.



# Add more value with charts and other new functionality



■ TMIS's CEO modernized their IBM i green screen programs and made users' jobs easier with Presto. He added value to the applications with a visual sales and inventory dashboard, Google Maps, faster data entry and better screen layouts.

[Watch video »](#)

## Leverage IBM i resources and future-proof applications

IBM i UI modernization tools are typically designed for RPG programmers, which gives many organizations the opportunity to use their existing staff for these projects. This modernization approach also enables you to leverage the applications and ERPs that your programmers have spent years developing and maintaining.

As programmers retire, organizations will need to attract new programmers. Deploying a modern solution that uses conventional web technologies will make this easier because the latest generation of programmers are more familiar with web-based solutions than RPG or COBOL. Solutions that give you control over the client-side code allow you to further future-proof your applications so you can take advantage of current technologies.

# Leverage IBM i resources and future-proof applications



- A Fortune-500 wholesale distributor \* has used several modern technologies while leveraging RPG as part of their modernization strategy.

The responsive portal application on the left provides easy access to PHP applications, modernized green screens, reporting archives and other non-IBM i applications.

They have also developed an order entry application using PHP. The client re-architected their existing RPG as web services so it was easy to call with PHP.

[Learn more »](#)

\*Name withheld for privacy reasons.

## Decrease training costs

It can take a long time to train users who are new to green screens and their unique navigation characteristics (think subfile options and function keys). New users will almost always prefer modern web pages over green screen applications. Not only are web applications similar to what people use on a daily basis, they also have consistent, mouse-driven navigation and intuitive input fields like drop down lists.

A television network that holds biannual telethons reduced training time by 33% after giving their green screens a web GUI with Presto because the screens are more intuitive and consistent to navigate.

33%

# Integrate with other technologies, platforms and data sources

Web applications are interoperable with other web technologies. You can provide a more seamless end user experience by communicating with additional web applications and data sources.

For example:

- **Other web applications:** Link and pass parameters to other web applications (PHP, .Net, RPG CGI etc.).
- **Web services:** Use web services for credit card processing and retrieving data, such as shipment information, from other servers.
- **Web technologies:** Use web technologies such as JSON and Ajax, and frameworks such as Bootstrap.
- **New data:** Embed new data to your screens that wasn't part of the original program.
- **New development:** Extend applications by creating new screens.
- **Portals:** Access your modernized applications from web portals that include links to other web applications.

- Challenger used Fresche solutions to develop .NET applications that manage and automate how data is entered and processed through their systems.

This has integrated multiple systems, reduced the time spent on manual data entry for invoicing and greatly reduced the risk of human error.

[Learn more »](#)

# Integrate with other technologies, platforms and data sources

**CBC BEARINGS - POWER TRANSMISSION ENGINEERED SOLUTIONS**

Category: CHAIN & SPROCKETS Metric Imperial View Cart ( 3 )

Product Description: Item Number: Search

Pitch: Add to Cart

**View Cart**

Customer: 123 - HARMONICS WHOLESALE Currency: AUD  
 Cart Number: 1466 Cart Created: 15/07/2014 4:01:09 Order Total: 44.88  
 Items in Cart: 3

Update Quantities

| Qty | UOM | Item Number     | Item Description          | Unit Price | Extended Price |
|-----|-----|-----------------|---------------------------|------------|----------------|
| 2   | /EA | AL844CHAIN      | AL844CHAIN ( LEAF1.0 4X4) | 8.29       | 16.59          |
| 3   | /EA | A600CHAINACETAL | REX CASE CHAIN            | 9.43       | 28.29          |
| 3   | /EA | 7314B.JPFAG     | 7314B.JP ANG CONT B/BRG   | .00        | .00            |

Continue Searching for Items Email Cart Complete Order

|   |   |    |                              |                              |      |        |        |        |
|---|---|----|------------------------------|------------------------------|------|--------|--------|--------|
| + | H | 38 | <a href="#">6 X 6 LACING</a> | <a href="#">BL466PINLINK</a> | POA  | 0.0000 | 0.0000 | 0.0000 |
| + | H | 38 | <a href="#">3 X 4 LACING</a> | <a href="#">BL534CHAIN</a>   | 3.31 | 0.0000 | 0.0000 | 0.0000 |
| + | H | 38 | <a href="#">3 X 4 LACING</a> | <a href="#">BL534CL</a>      | .25  | 0.0000 | 0.0000 | 0.0000 |
| + | H | 38 | <a href="#">3 X 4 LACING</a> | <a href="#">BL534PL</a>      | .61  | 0.0000 | 0.0000 | 0.0000 |
| + | H | 38 | <a href="#">4 X 4 LACING</a> | <a href="#">BL544CHAIN</a>   | POA  | 0.0000 | 0.0000 | 0.0000 |
| + | H | 38 | <a href="#">4 X 6 LACING</a> | <a href="#">BL546CHAIN</a>   | 4.48 | 0.0000 | 0.0000 | 0.0000 |
| + | H | 38 | <a href="#">4 X 6 LACING</a> | <a href="#">BL546CL</a>      | .51  | 0.0000 | 0.0000 | 0.0000 |
| + | H | 38 | <a href="#">4 X 6 LACING</a> | <a href="#">BL546PL</a>      | .96  | 0.0000 | 0.0000 | 0.0000 |
| + | H | 38 | <a href="#">LEAF CHAIN</a>   | <a href="#">BL623CHAIN</a>   | POA  | 0.0000 | 0.0000 | 0.0000 |

<< Previous Page Next Page >>

- Inenco's modernized shopping cart application uses Bootstrap, an HTML/CSS/JavaScript framework, to provide responsive and contemporary looks for partner applications. It also uses an ordering system that enables customers to enter Inenco's shopping cart from other websites, shop for products, then return to the original website to check out.

[Learn more »](#)

## Integrate with Windows applications

It's possible to integrate your web applications with Windows applications (e.g. Microsoft Office). This can include linking directly to PDFs or Excel spreadsheets, or supporting common Microsoft Office desktop functions. These integrations save time and increase end user satisfaction by providing a more seamless experience.

Adidas turned to Fresche to rapidly generate an integrated, web-enabled system capable of graphical information work and easy, rapid integration with other applications. With no changes required to the legacy system, Newlook integrated seamlessly with Excel, Word and other desktop applications.

"Trainees get it right away. We are saving approximately 15 hours of training time for new staff because they are already familiar with the graphical interface."

**B.H. Lee** — Team Leader, Adidas

[Learn more](#) »



# Solutions for all of your IBM i UI modernization needs



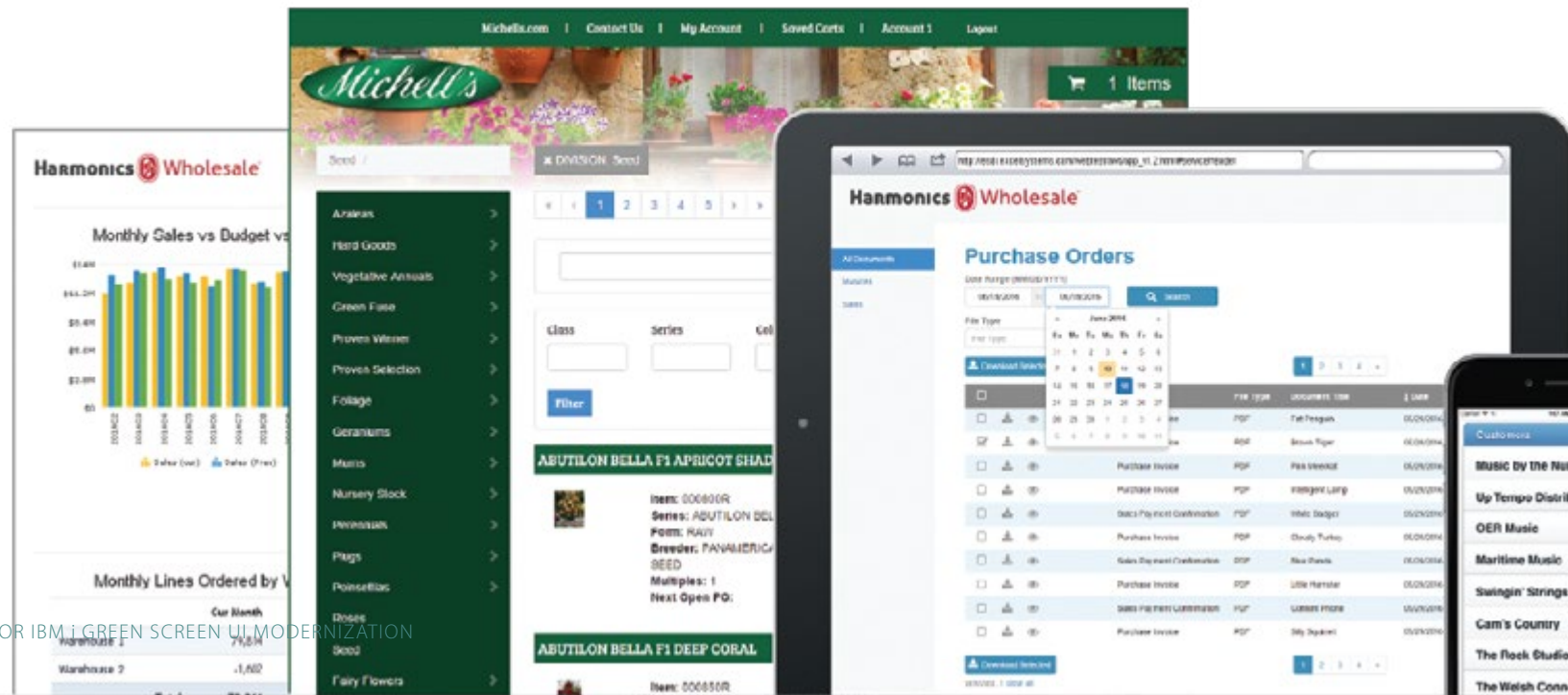


# Solutions for all of your IBM i UI modernization needs

A well-planned web and mobile strategy drives revenue, increases competitive advantage and delights end users. Now that you have a strong business case for IBM i modernization, you need the right solutions to carry out your strategy. At Fresche, we believe that going from green screen to web and mobile should be a breeze.

Whether you want to modernize green screen applications or develop new web and mobile applications, we provide the most options to help you easily create modern web interfaces, improve productivity, drive revenue and offer an enhanced user experience.

Our key digital transformation offerings, Newlook, Presto and WebSmart, give you the flexibility to choose the approach that best meets your business needs and skills.

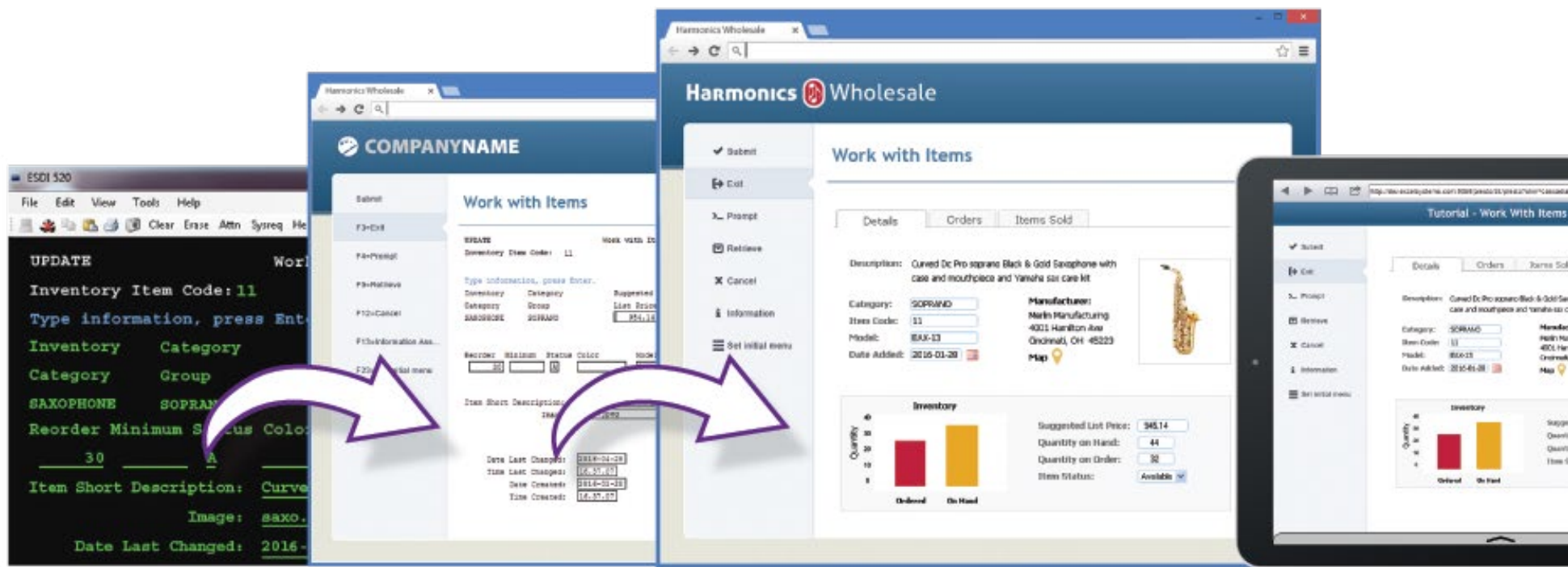


## Modernization options to meet your needs

- **Green Screen Modernization:** Quickly go from green screens to a modern UI with native IBM i, Windows-driven or thin client solutions. You have the option to choose 5250 or RPG Open Access.
- **Web & Mobile Development:** Rapidly develop RPG or open-source PHP and Node.js applications that users can access from PCs, tablets and smartphones.
- **Coexistence:** Leverage your existing applications while seamlessly integrating new web applications.
- **SOA / APIs:** Leverage existing applications to improve agility and create reusable components. Take advantage of modern SOA concepts to integrate applications, publish to the web, improve navigation and boost developer productivity.
- **Proven Vendor:** Fresche is an industry leader that has successfully helped thousands of organizations across many industries, like government, finance, healthcare, manufacturing and transportation, modernize. Our tech support team is also consistently rated one of the very best.

# A phased approach to UI modernization

Some organizations choose to take a phased approach to green screen UI modernization. This approach is considered lower risk because it provides quick results out of the box and leverages your existing assets.



## A phased approach to UI modernization

When you're ready, you have endless opportunities to further enhance your environment, integrate with other technologies and develop strategic applications that generate revenue or extend your ERP.

- **Out of the box:** Quickly go from green screen to web by giving your existing green screens a web GUI. Fresche solutions give you quick results with templates that apply to entire your application set. Users get a much-improved experience over green screens, require little to no training compared to green screens, and can access the applications from any device.
- **Further enhance your screens:** Enhance the out-of-the-box experience for your most important screens by improving workflows and integrating with modern solutions. You can use a visual designer to add drop down boxes, tabs, date pickers, images, charts and much more to your web-enabled screens without coding HTML.
- **New application development:** Leverage your RPG code and IBM i to create strategic open-source PHP and Node.js applications, including B2B or B2C eCommerce applications. Our solutions shorten the web development learning curve by generating the starting HTML and Node.js or PHP for you. You can even integrate new web applications with applications that you modernized in Phase 1 and 2.

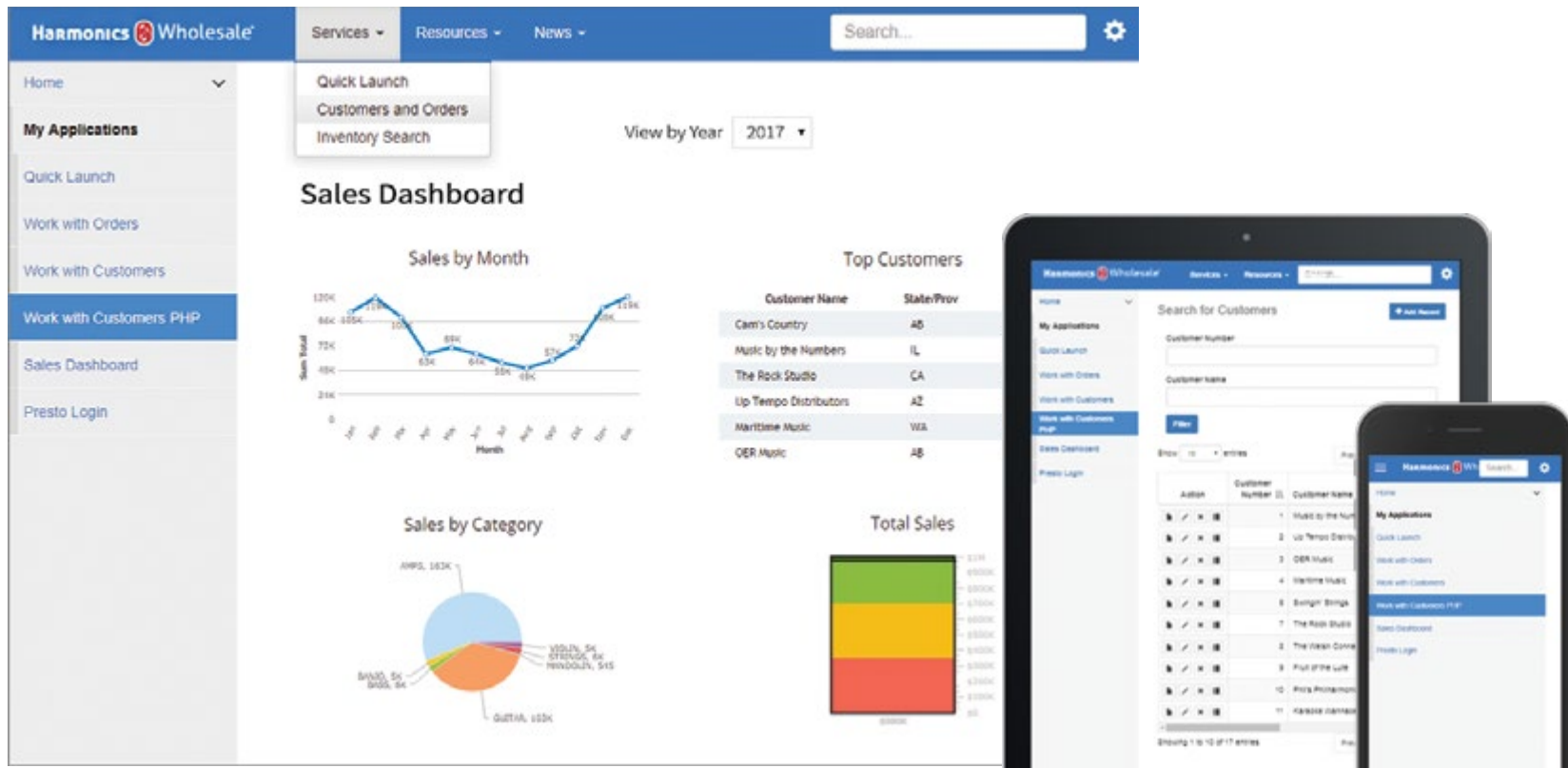
➤ **Trials Available**

Contact:  
[info@freschesolutions.com](mailto:info@freschesolutions.com)

# IBM i portal for secure access to IBM i web applications

Give employees, vendors and clients secure access to enterprise information and documents from their browsers, while leveraging your trusted IBM i system.

Our IBM i-hosted web portal, Nexus Portal, increases productivity and helps your users make faster decisions with applications, documents and more at their fingertips. Nexus is available as a standalone solution or in conjunction with other Fresche solutions. It provides organized and secure access to WebSmart web applications, Presto and Newlook web-enabled green screens and much more. [Learn more »](#)



# Strategic web applications

Not enough time or expertise to develop web applications?

We have a large team of full-time IBM i and Fresche solution experts who can assist you with all aspects of IBM i UI modernization including web and mobile development, web services to integrate with other platforms, extending your ERP and much more.

Your organization will benefit from our experience in developing hundreds of IBM i web applications for a wide range of small and Fortune 500 organizations. We can create entire web applications for you, jumpstart your project or work in tandem with your IT staff. Partner with us for short-term, time-sensitive or other projects without hiring new staff. [Learn more »](#)

The image displays four screenshots of web applications:

- Top Left:** An eCatalogue Product Search interface for 'ROLLER BEARINGS'. It features a table with columns for 'Inside Diameter', 'Outside Diameter', and 'Width'. The 'Items in cart' count is 0.
- Middle Left:** A customer profile page for 'HARMONICS WHOLESALE'. It shows 'Cart Number: 1468', 'Items in Cart: 3', and a list of items with columns for 'Qty', 'UOM', 'Item Number', and 'Item Description'. Items include 'AL544CHARN (LEAF 1.0 4X4)', 'REX CASE CHARN', and '7314B JP FAG'.
- Middle Right:** A 'Monthly Sales vs Budget vs Prev Year' bar chart. The Y-axis represents sales values from 0 to 100,000. The X-axis shows months from 01/2019 to 12/2019. The legend indicates Sales (blue), Order (green), and Budget (red).
- Bottom Right:** A 'Daily' sales report interface for 'Mitchell's'. It includes a search bar, filters for 'Sales', 'Order', 'Price', 'Brand', and 'New Model', and a table of product details for 'MANTLE BELLA F1 APRICOT BERRIES'.

# IBM i modernization experts

Fresche is led by a senior management team with decades of experience in the midrange market and in modernization. With over 400 employees and highly skilled experts in all areas of application modernization and management, we are well equipped to help you with all your IBM i application needs.

Here are some of our IBM i UI modernization experts. Let's talk!



**Brendan Kay**

Chief Technology Officer  
20 years with Fresche



**Nick Hampson**

Product Manager  
17 years with Fresche



**Chris Koppe**

Senior VP, Transformation &  
Modernization Services  
29 years with Fresche



**Trevor Perry**

Modernization Specialist  
34 years in the IBM industry



**Jennifer Fisher**

VP, Ecosystems  
28 years with Fresche



**Mike Pavlak**

IT Strategist  
27 years in the IBM i industry



**Ray Everhart**

Modernization Specialist  
29 years in the IBM industry



**Robert Arce**

Modernization Specialist  
21 years in the IBM i industry



**Greg Patterson**

Senior Sales Engineer  
10 years with Fresche



**Marcel Sarrasin**

VP, Marketing and  
Business Development  
17 years in the IBM i industry



**Christine McDowell**

Senior Marketing Director  
26 years with Fresche



**Chelsea Fenton**

Senior Web Developer  
10 years with Fresche





**I.T. can make you smile!**

**FRESCHÉ** SOLUTIONS

Fresche Solutions HQ,  
Montreal, QC Canada  
+1 514 747-7007  
Toll-free 1-800-361-6782  
info@freschesolutions.com

At Fresche you'll find everything you need to maximize the value of your IT and meet your business goals. Our complete portfolio of products and services helps you manage, enhance, and evolve your IBM i applications so you can leverage them to take advantage of modern technology, meet growing business demands and build upon your existing IT investment.

For more information, please visit <http://www.freschesolutions.com>.

© 2018 Fresche Solutions Inc. All rights reserved.

All other trademarks are properties of their respective owners. This publication may not be reproduced or distributed in any form without Fresche's prior written permission.